



www.airlink-ilife.com

AirLink 4G TrackEye Embed Pick Up Voice ASP52 1.3megapixel / ASP53 2.0megapixel 4G/3G IP camera User Guide

Contents

1. Camera Description	2
2. Hardware installation	3-4
3. Add & view camera from PC	5
4. Add & View from APP.....	6-7
5. Set up from Web IE.....	8
6. How to set up for my 4G camera's modem?.....	9
7. Can I use Wifi signal for priority , if lost wifi signal then switch to 4G service? & Frequency question.....	10



www.airlink-ilife.com

4G/3G IP camera Quick Start Guide

1.1 Camera packaging



Packaging contents

- 1) Camera body *1
- 2) Screws bag*1
- 4) Software disk*1
- 5) User manual*1
- 6) Antenna*2

1.2 Camera Interference



ASP52 , ASP53

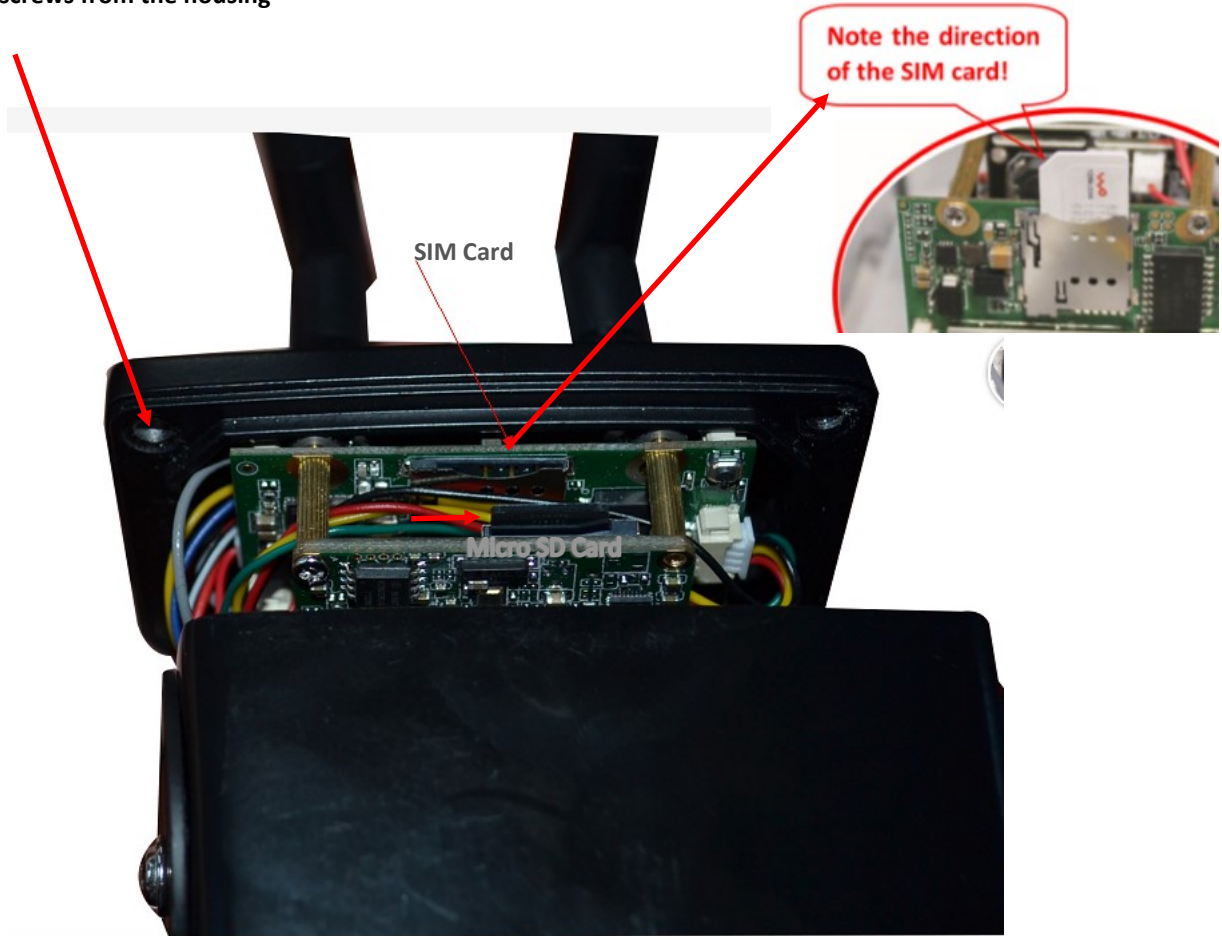
Quick Start Guide

Contact Info: sales@airlinkwifi.net

※ Notification: Please insert SIM card then antenna before power on your 4G camera , 4G SSID MiFi-xxxx
Password 1234567890

2.1 Install the Micro SD card , SIM card and antenna

2.1.1 Remove screws from the housing



2.1.2 Insert SIM card & Micro SD card

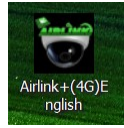
1. SIM card size type is Micro Sim 12mmx15mmx0.8mm
2. Please note the direction of SIM card installation
3. Hot swapping is not supported.
4. Micro SD card support max 128G

2.2 Connect power adaptor and antenna



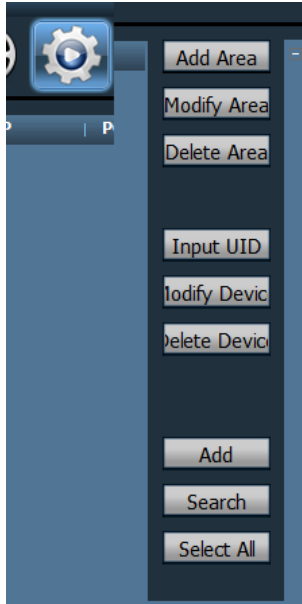
3 Adding cameras to PC CMS

3.1.1 Download program “AirLink +”

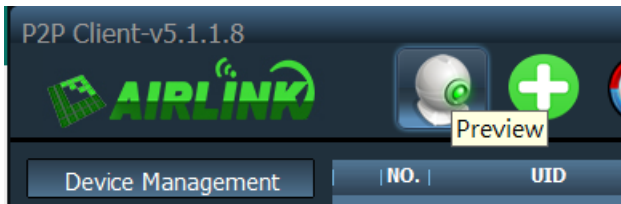


3.1.2 View via local IP address through CMS auto search or by UID number

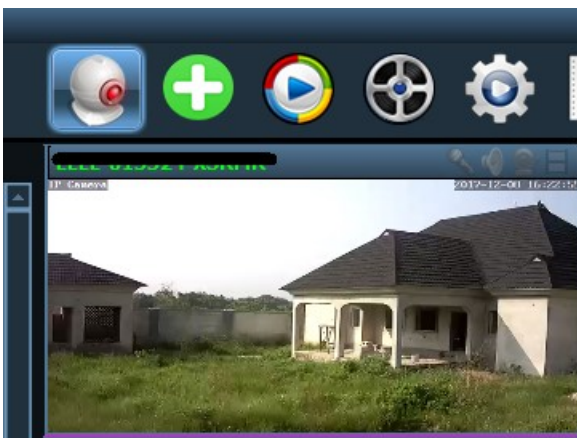
Search SSID MIF xxxxxx from your network, password is 1234567890, login in to “Airlink +” login : admin, password is blank



Click preview



Connected your camera success



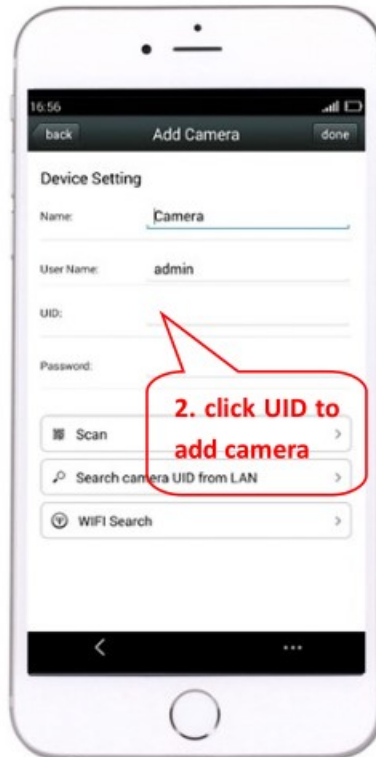
More details please read IP Camera AirLink+4GP2P CMS user manual

4 View via smart phone

4.1 Download **Camtop** or **Hicam** from Google Play Store and iOS App Store or scan QR code on the camera box

click “+” to input the camera UID & password to add camera

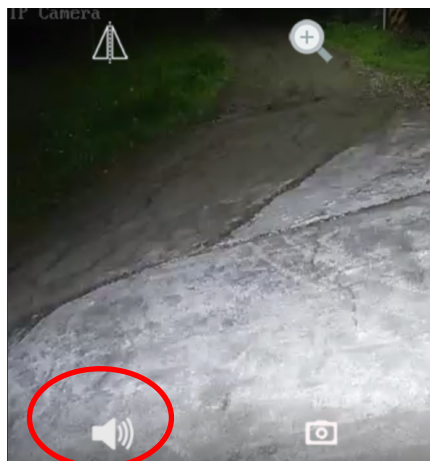
Default login / password is admin/admin



Scan QR Code for quick install

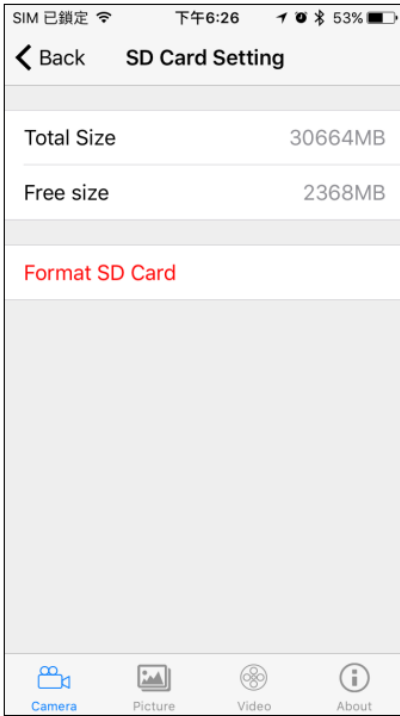
If your 4G camera is offline, please “Check the SIM card in correct way” or not.

4.2 Click voice icon for voice listening

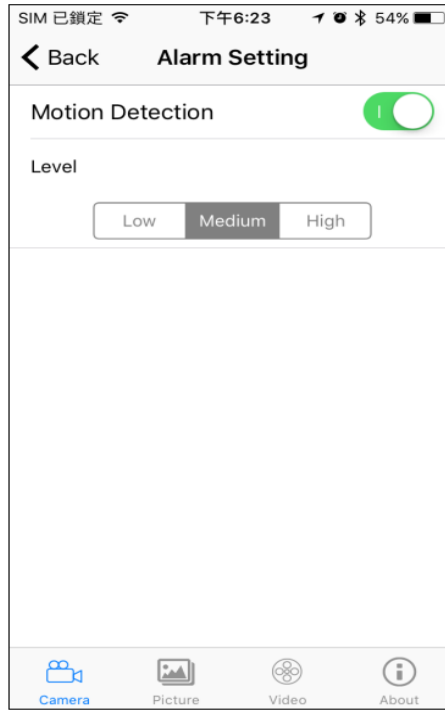


4.2 Set Micro SD card for recording

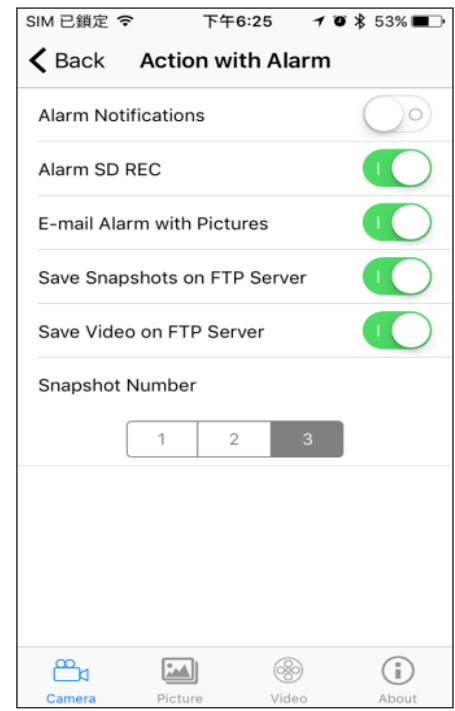
4.2.1 Format SD card



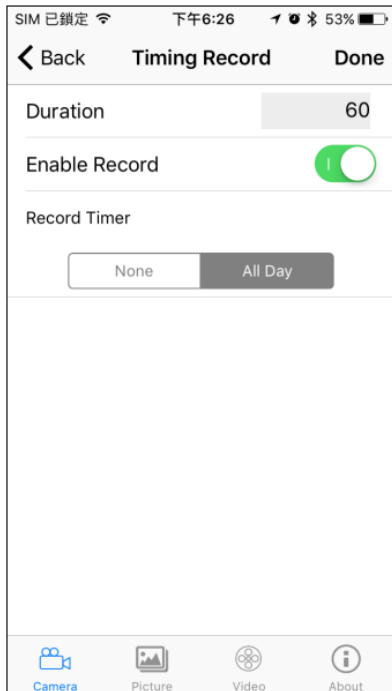
4.2.2 Alarm Setting switch on of your motion detection



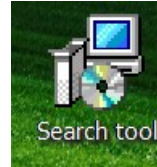
4.2.3 Switch Action with Alarm with your prefer



4.2.4 Set record timer



5. Setting up or view your camera via web IE , download “ Search IP tool” Login / password as admin/admin



Language

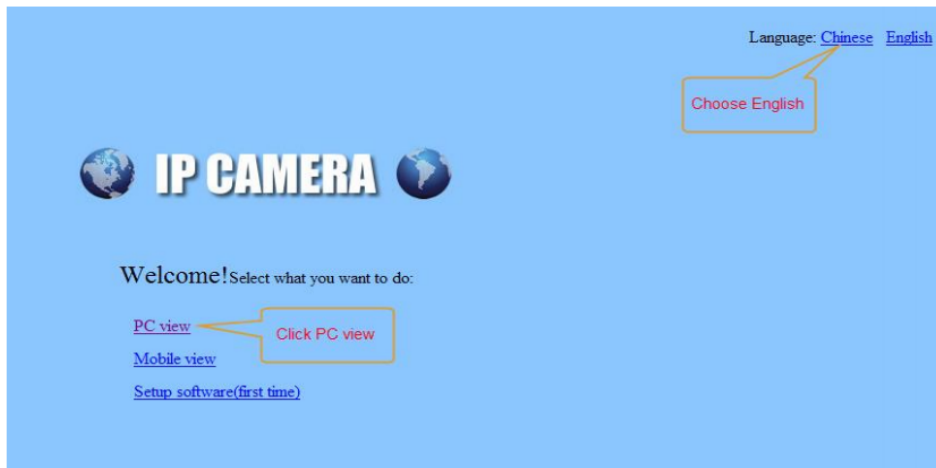
Discovery IP Camera

Select

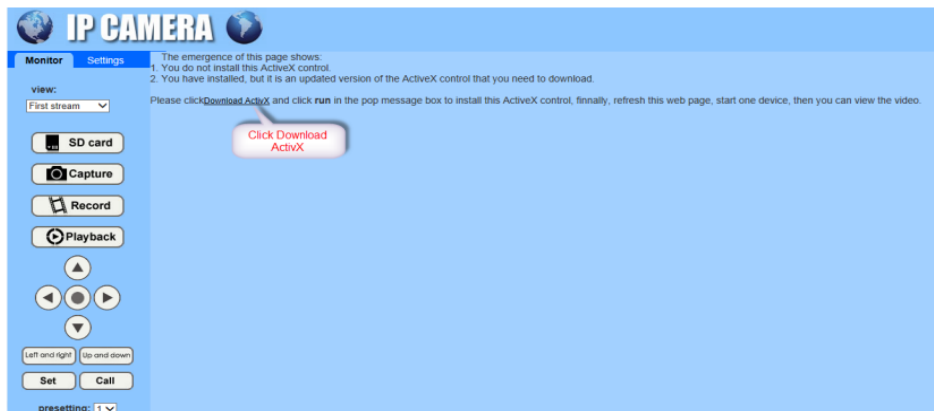
Netmask

Gateway

Name	IP Address	Process	Conn...	Firmware ver...	ESBE ID	Netmask	Gateway	MAC Ad
------	------------	---------	---------	-----------------	---------	---------	---------	--------



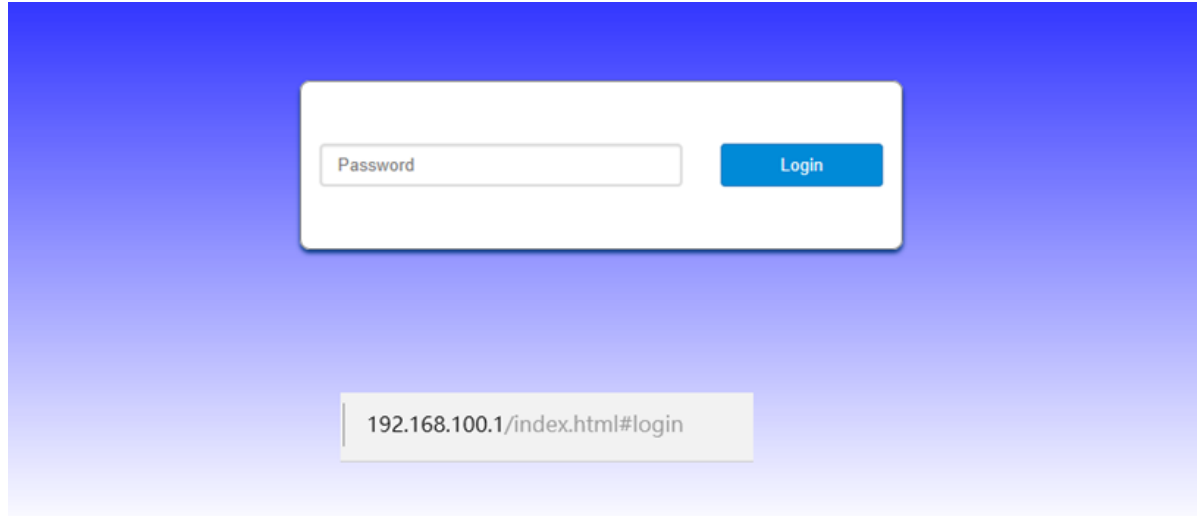
click “PC view”, as shown below:



6. How to set up for my 4G camera's modem?

Please make sure in the same network then type from IE [http:// 192.168.100.1](http://192.168.100.1)

Login: admin

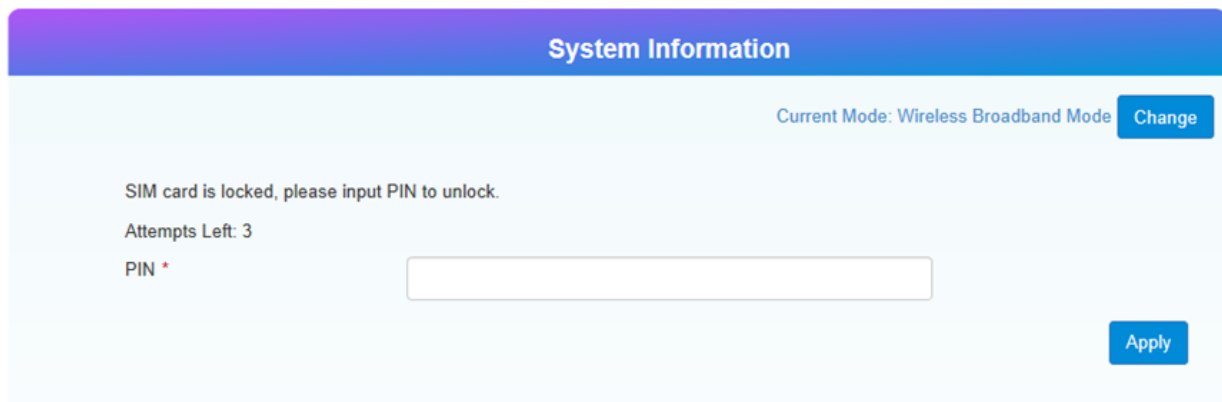


A screenshot of a web browser's address bar showing the URL `192.168.100.1/index.html#login`. Below the address bar is a login form with a text input field labeled "Password" and a blue "Login" button.



A screenshot of the login form with the text "admin" entered into the password field. The "Login" button is visible to the right of the input field.

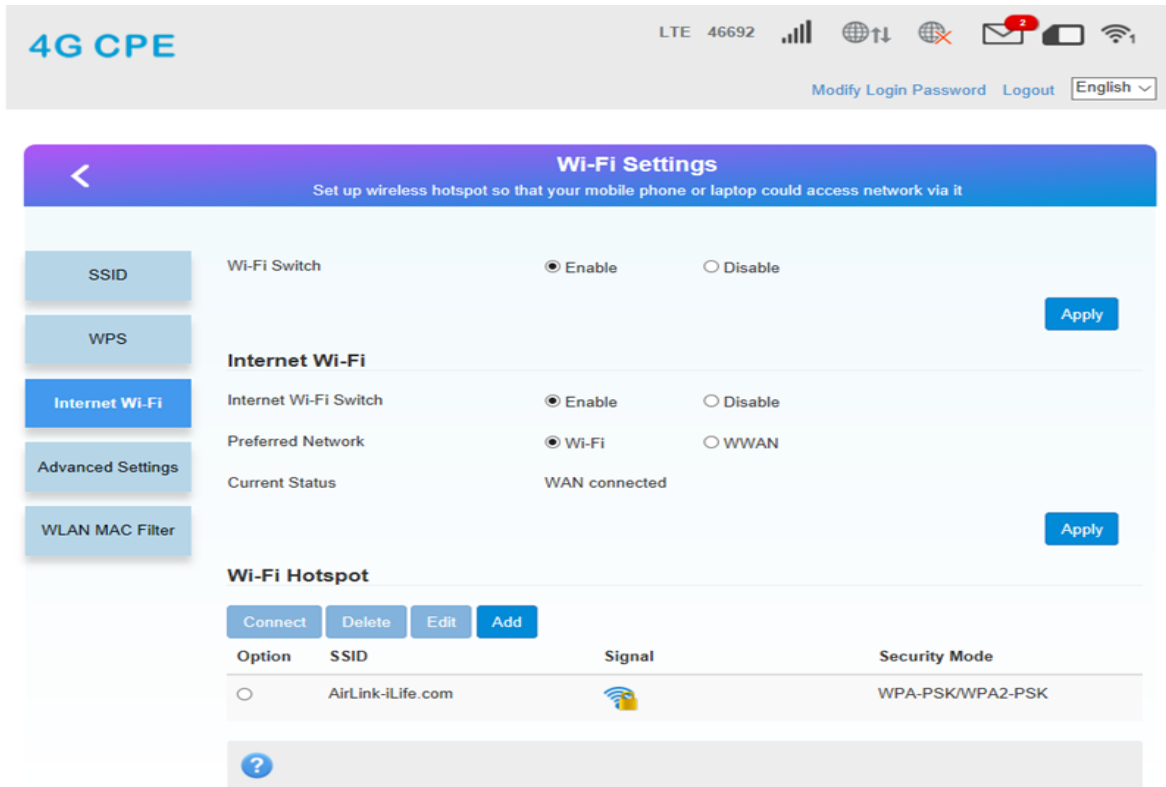
If your SIM card has login password, please input your SIM card password first



A screenshot of the "System Information" page. At the top right, it says "Current Mode: Wireless Broadband Mode" with a "Change" button. Below this, a message reads "SIM card is locked, please input PIN to unlock." followed by "Attempts Left: 3". There is a "PIN *" label and an empty text input field. An "Apply" button is located at the bottom right.

7. Can I use Wifi signal for priority , if lost wifi signal then switch to 4G service?

Yes, you can select SSID you prefer from internet Wi-Fi

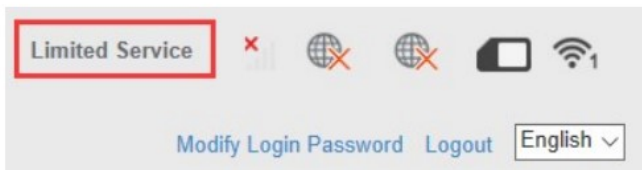


8. Frequency questions

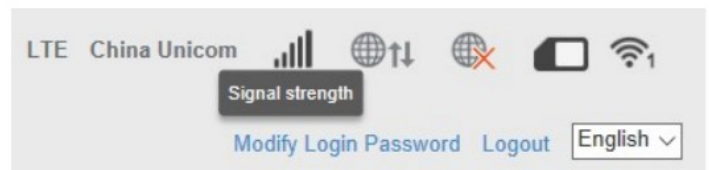
1. Why my 4G camera is offline?

A: 1. Please make sure insert of the sim card in correct position.

2. Double make sure your sim card not invalid, please insert your sim card into your 4G smart phone make sure in good signal of your area with your local provider service



Out service



Good signal

Thank you for read our quick start guide, more details please read user manual in CD. If you need our support please send email to us at support@airlinkwifi.net